

# H20S

**Honda CBR1000RR 2008-2011**

**WITHOUT ABS**

Kit for the left side			
ID	Description	Cat.no.	Pcs
1	Slider RDMoto	SL	1
2	Cover	SLcap..	1
3	Slider adapter	DV-313	1
4	Bolt M6x25	877	3
5	Bolt M4x16	876	2
6	Bolt M10x25mm	868	1
7	Bolt M8x25mm	831	1
8	Steel adapter	523	1
9	Dural. cylinder d=11mm	17	1
10	Tape 3M		1
11	Pad M12	803	1
12	Bolt M12x70x1,25mm	917	1
13	Stainless steel bar 8x463x30x30		1

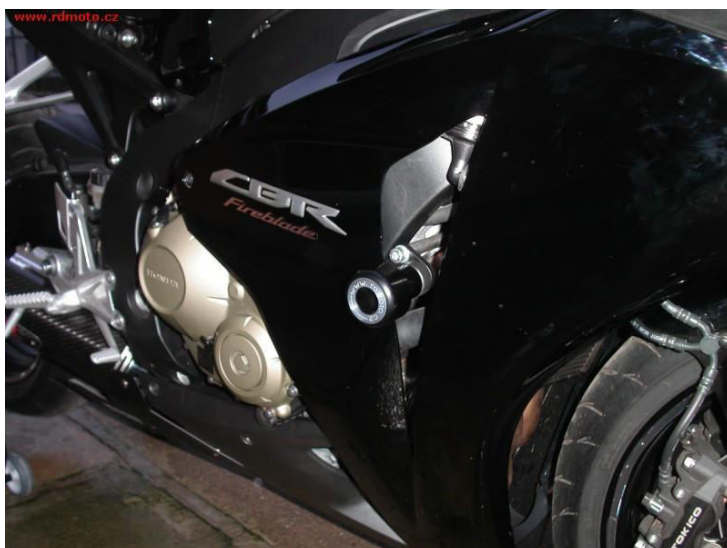
Kit for the right side			
ID	Description	Cat.no.	Pcs
1	Slider RDMoto	SL	1
2	Cover	SLcap..	1
3	Slider adapter	DV-313	1
4	Bolt M6x25	877	3
5	Bolt M4x16	876	2
6	Bolt M10x25mm	868	1
7	Bolt M8x25mm	831	1
8	Steel adapter	524	1
9	Dural. cylinder d=4mm	119	1
10	Tape 3M		1



### **Installation:**

1. Remove fairing of motorcycle.
2. Remove the original bolts M12.
3. Use tape 3M during the installation (between adapter and frame of motorcycle).
4. Place steel adapters on both sides.
5. Dont forget to place dural cylinder between steel adapter and frame of motorcycle.
6. Tighten left steel adapter with bolt ID12 and right steel adapter with original bolt.
7. Insert steel rod between adapters.
8. Tighten all bolts and put fairing back.
9. Now place slider on slider adapter with 3 bolts M6.
10. In the end fit cover on slider with 2 bolts M4.

### **ILLUSTRATIVE PHOTO**



**Warning – we recommend to use safety glue on threads (medium strong – blue colour).**