

Important! Care and cleaning information

Heat will turn your exhaust system a golden or purple colour, this is normal result of nature of material.

If you find a leak, a little high temperature silicon sealant should fix it.

Clean your exhaust with stainless steel polish every 1-2 months to retain the luster and remove dirt and grime.

If you ride in snow areas or near the sea, carefully wipe the exhaust down to remove any possible salt residue, which result in rusting.

If you are storing your motorcycle for the season, wipe the exhaust system down with rubbing alcohol before storage.

Check all fasteners are properly tighten after first 100 km. and every 1000 Km.

Any abuse, misuse, crash, improper installation and/or modifications done over the exhaust system will avoid any warranty.

Important! Informations de maintenance et de nettoyage

Le chaleur peut faire changer de couleur le silencieux principalement a l'entrée ou la sortie de gaz.

La couleur peut être dorée ou violette, ceci est un phénomène normal de réaction du métal à la chaleur sur l'anodisation.

En cas de légères fuites de gaz celles-ci peuvent être comblées avec un joint silicone haute température.

Nettoyer régulièrement votre ligne d'échappement avec un polish (doux) et un chiffon non abrasif (coton) pour ne pas rayer l'anodisation.

Si vous êtes amenés à conduire l'hiver sur des routes salées, en bord de mer ou lors d'une immobilisation prolongée, nous vous conseillons de nettoyer votre ligne avec de l'alcool (type nettoyant vitre).

Vérifier les fixations de votre ligne de silencieux lors des 100 premiers Km. puis tous les 1000 Km.

Tout abus, mauvaise utilisation, collision, mauvais montage ou modification sur la ligne d'échappement entraînera l'annulation de la garantie.

Importante! Información de mantenimiento y limpieza

El calor cambiará el color del sistema de escape a dorado o lila, siendo un proceso natural de los materiales.

Si aprecia pequeñas fugas, puede obturarlas con sellante de silicona de alta temperatura.

Limpie su sistema de escape con pulimento para acero inox. cada 1-2 meses para mantener el brillo y retirar la suciedad.

Si conduce en zonas de nieve o cerca del mar, limpie cuidadosamente el sistema de escape para retirar posibles restos de sal que oxidarán el escape.

Si va a guardar la motocicleta por un largo periodo, limpie el sistema de escape con alcohol antes de aparcarla.

Compruebe todas las fijaciones de su línea de escape después de los primeros 100 Km. Y cada 1000 Km. Cualquier abuso, mal uso, colisión, defecto de instalación y/o modificaciones realizadas sobre el sistema de escape invalidarán cualquier garantía.

Document nº **9257**

Last update: **21/07/2021**

Adaptable silencer / Adaptable schalldämpfer

Silenciador adaptable / Silencieux adaptable

Compatible with:

**YAMAHA TRACER 700
(RM30, RM31)**

Exhaust type: **Original position**

FITTING KIT PARTS

1 x BOX1SK UNDER ENGINE CATALYST BOX
1 x KIT9564C1K MANIFOLD
1 x KIT7653T LINK PIPE
2 x C5155 METALLIC CLAMP
1 x SOP9762NEW CATALYST BOX BRACKET
1 x SOP7262 MUFFLER'S BRACKET
1 x EMBM8 SCREW COVER
3 x TLLOM8X16D7984 SCREWS
4 x GLOWM6 WASHERS
1 x TUERM8D6923 NUT
2 x MUELLE Ø10X40 SPRINGS
2 x GLOWM8 WASHERS
1 x TLLOSOLA (MOUNTED ON CAT BOX)
3 x ARANM8 WASHERS
4 x TLLOM6X16D912IN SCREWS
1 x TIRA MUELLE SPRING STRIP TOOL
2 x ARAN9762 M6 LASER CUT WASHER
2 x ARANM6A M6 WASHER

Important! Please read carefully

Is recommended that fitting be made by a qualified motorcycle technician.

Carefully read all instructions before starting installation.

Make sure that all motorcycle parts are completely cool before starting.

All silencers without CE e9-Approval number are not for road use.

Important! A lire Attentivement

Il est recommandé que le montage soit effectué par un mécanicien qualifié.

Bien lire avec attention toute la notice de montage avant de commencer le montage.

Attendre que toutes les pièces de la moto soit froide avant de commencer l'installation des silencieux.

Toutes les silencieux sans numéro d'homologation CE e9 no doivent pas être utilisés sur la voie publique.

Importante! Lea atentamente

Es recomendable que la instalación sea efectuada por un mecánico cualificado.

Lea detenidamente todas las instrucciones antes de empezar la instalación.

Asegúrese que todos los componentes de la motocicleta estén totalmente fríos antes de manipularlos.

Todos los silenciadores sin número de homologación CE e9 marcado no son aptos para uso en vía pública.

Fitting instructions

1. Remove the original silencer.
2. Mount the adaptable silencer as shown in the drawing.
3. Check that the fasteners are properly tightened.

Montageanleitung

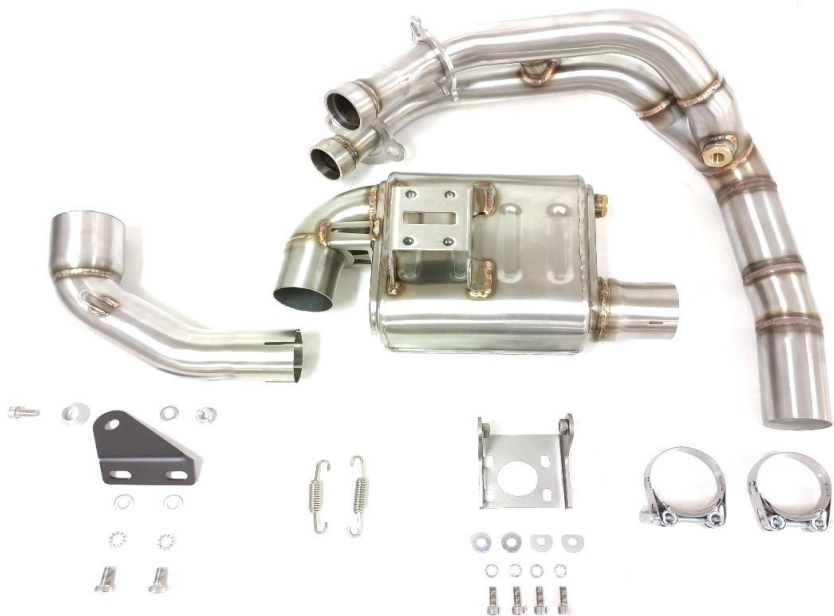
1. Bauen Sie den Original-Schalldämpfer ab.
2. Befestigen Sie den Umbau-Schalldämpfer, wie auf der Zeichnung abgebildet.
3. Überprüfen Sie, ob die Befestigungen richtig festgezogen sind.

Instructions de montage

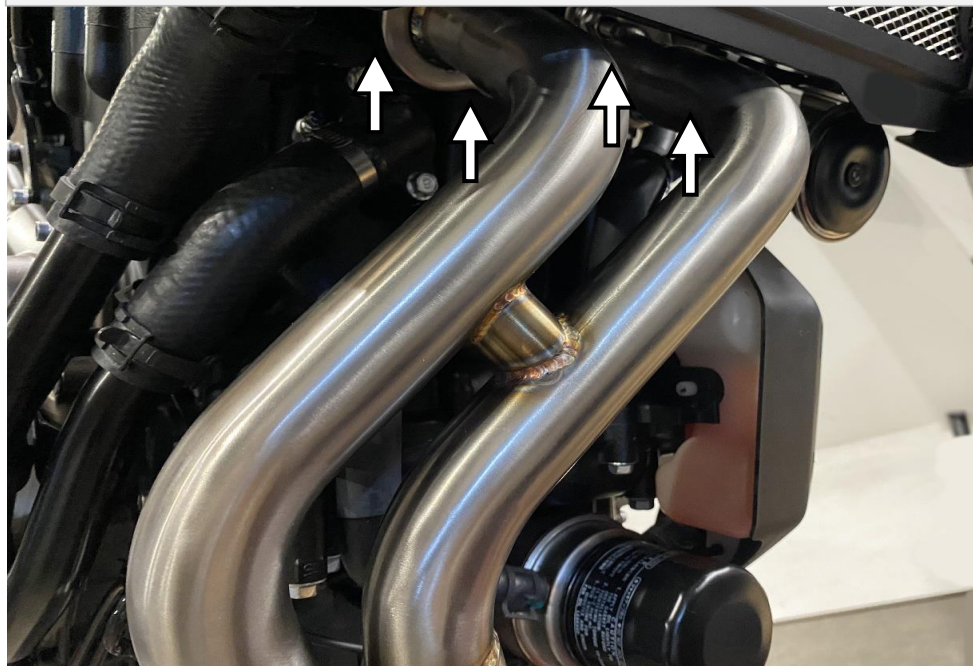
1. Démontez le silencieux d'origine.
2. Montez le silencieux adaptable comme indiqué sur le schéma.
3. Vérifiez si les fixations sont bien serrées.

Instrucciones de montaje

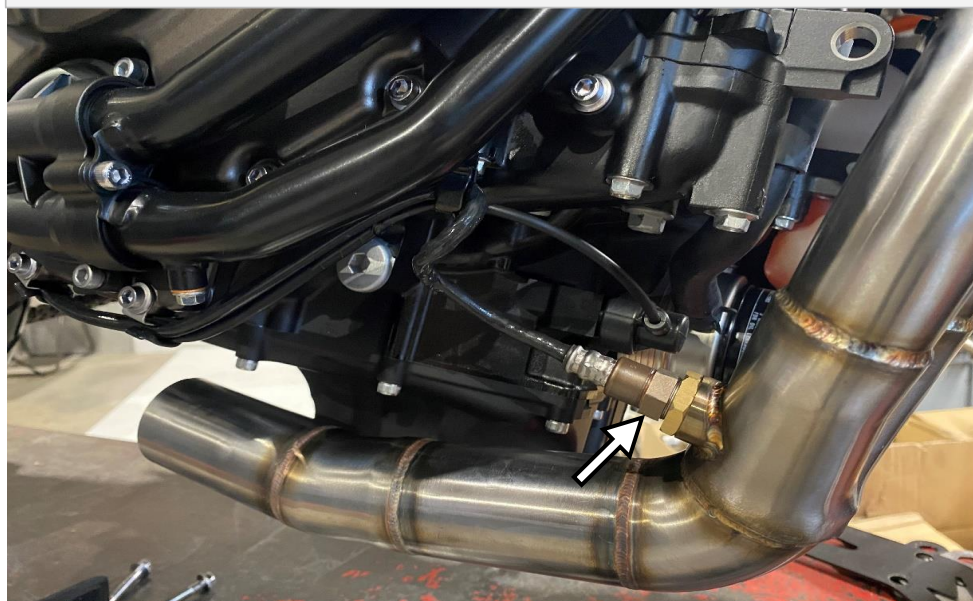
1. Desmontar el silenciador original.
2. Montar el silenciador adaptable como muestra la figura.
3. Comprobar que las fijaciones estén debidamente apretadas.



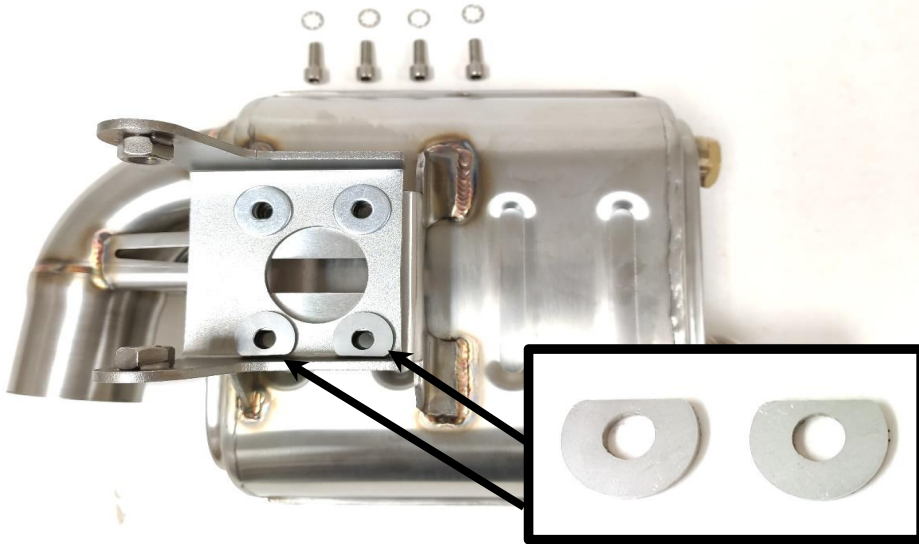
1. Assemble main manifold and just hand tighten 4 x stock cylinder nuts.



2. Tighten Lambda sensor into the manifold.



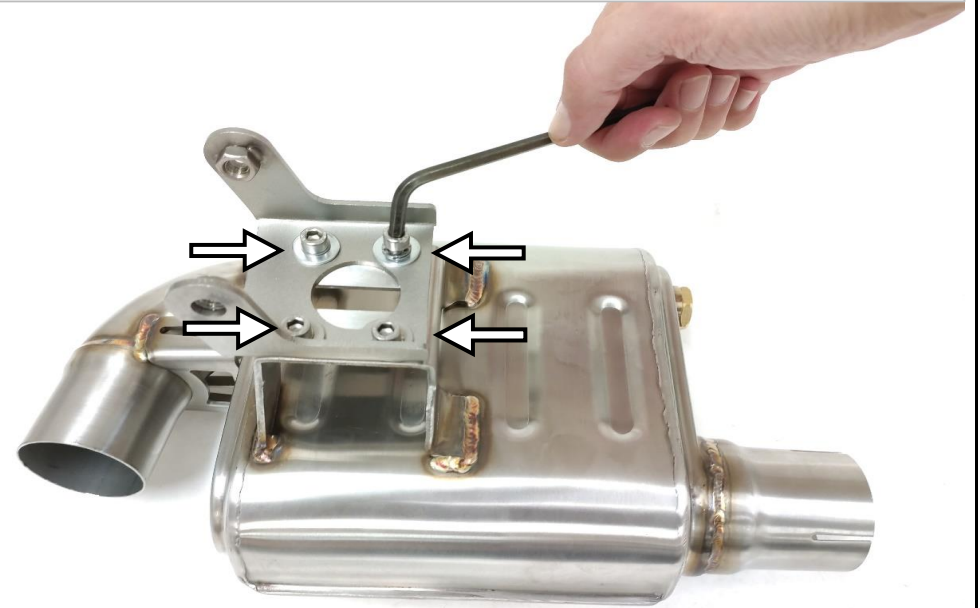
3. Correctly position SOP9762NEW box bracket as shown below using 4 x M6x16 screws, 4 x GLOWM6 washers, 2 x ARAN9762 & 2 X ARANM6A washers.



4. Under engine catalyst box bracket's mounting detail.



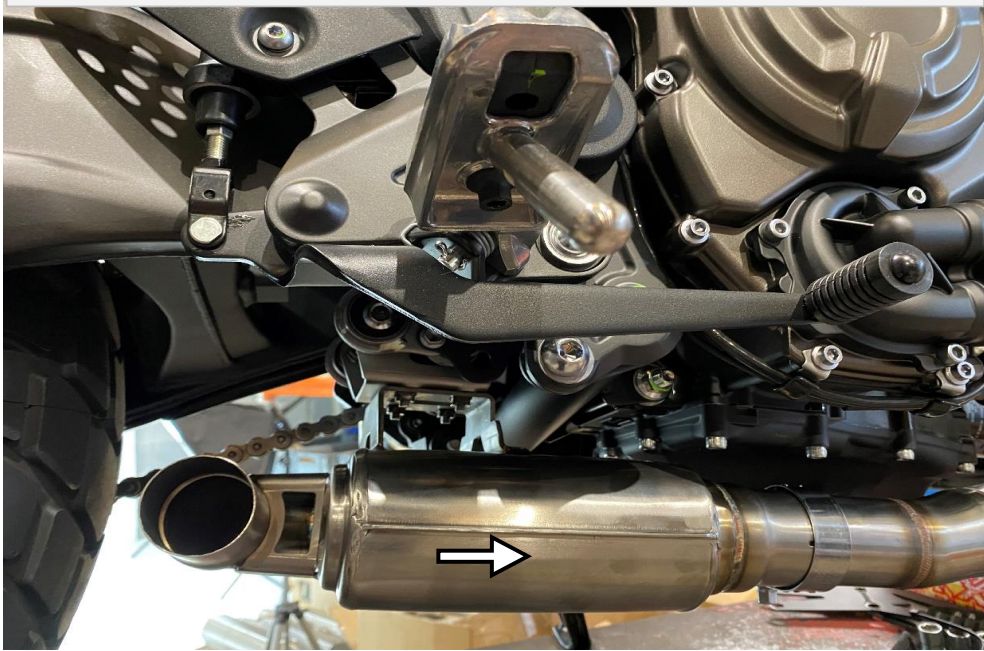
5. Tighten 4 x M6x16 before connecting with manifold.



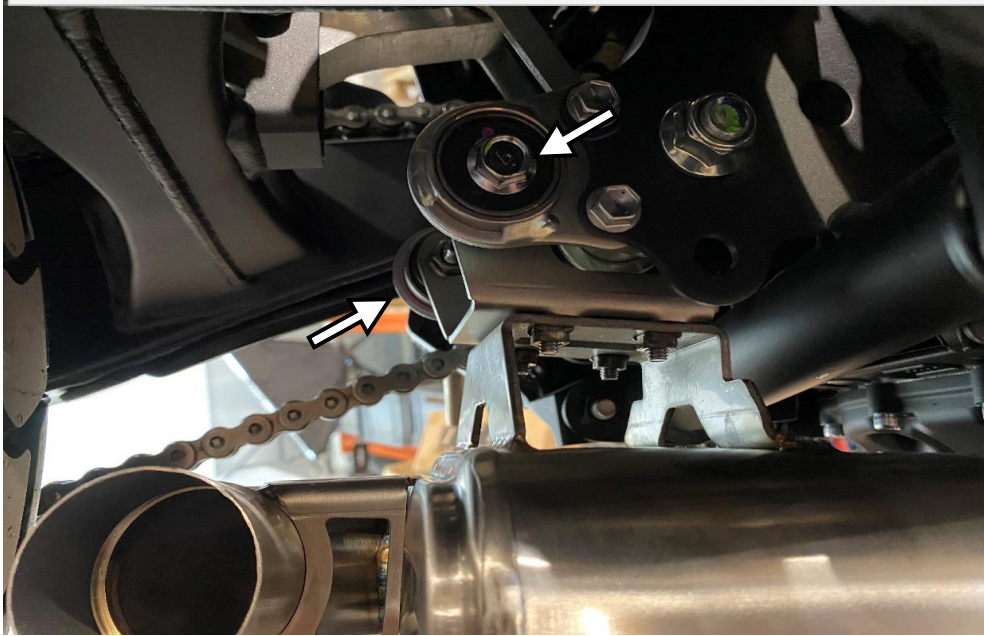
6. Place C5155 metallic clamp.



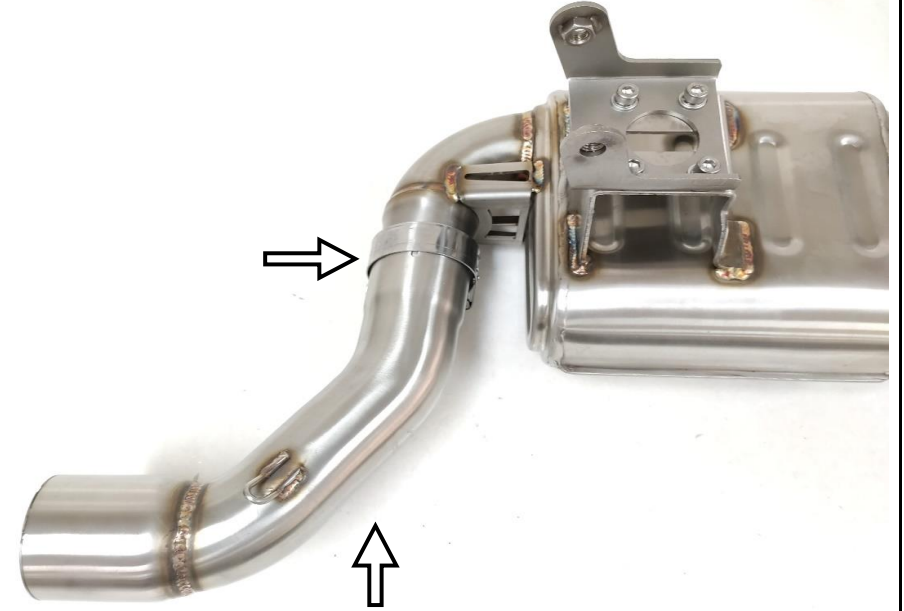
7. Slide under engine catalyst box onto the manifold.



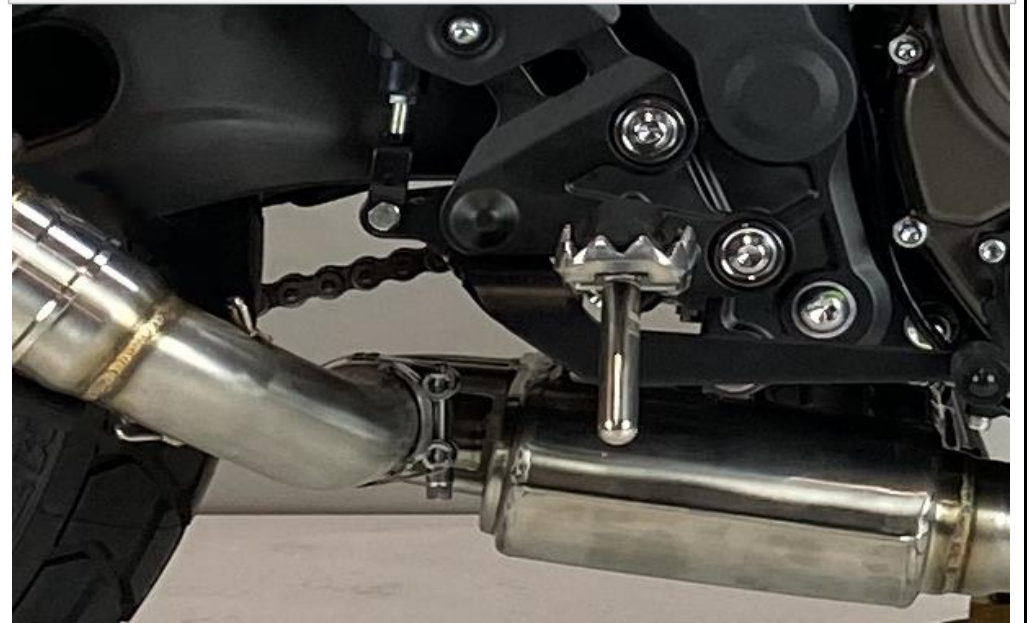
8. Mount cat. box to the frame's bracket, hand tighten, using 2 x stock bolts.



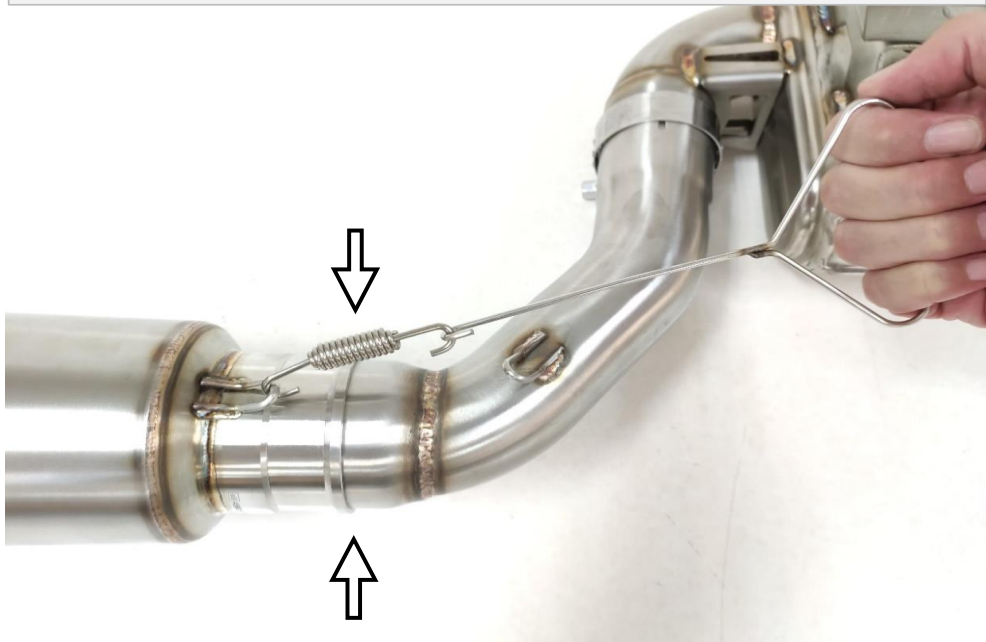
9. Place C5155 metallic flange onto the KIT7653T link pipe to connect with cat. box.



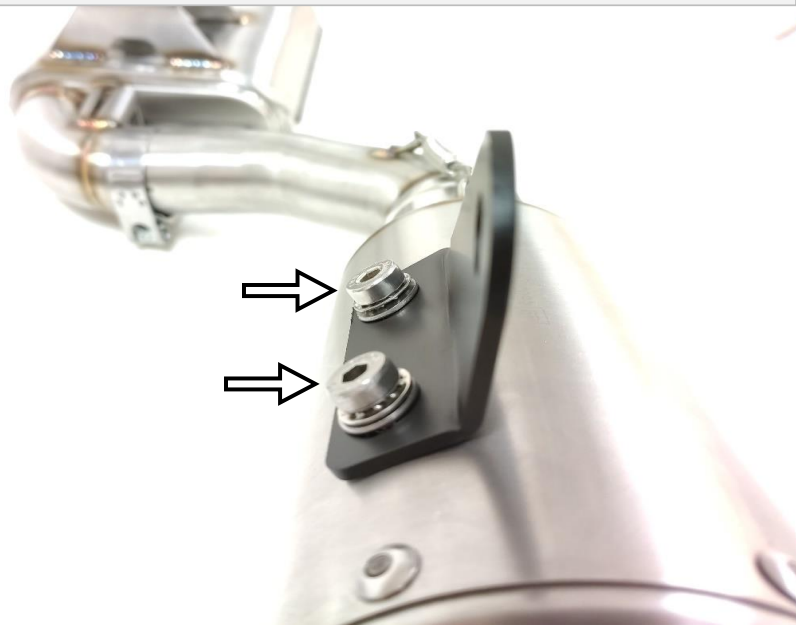
10. Catalyst box and link pipe mounting details.



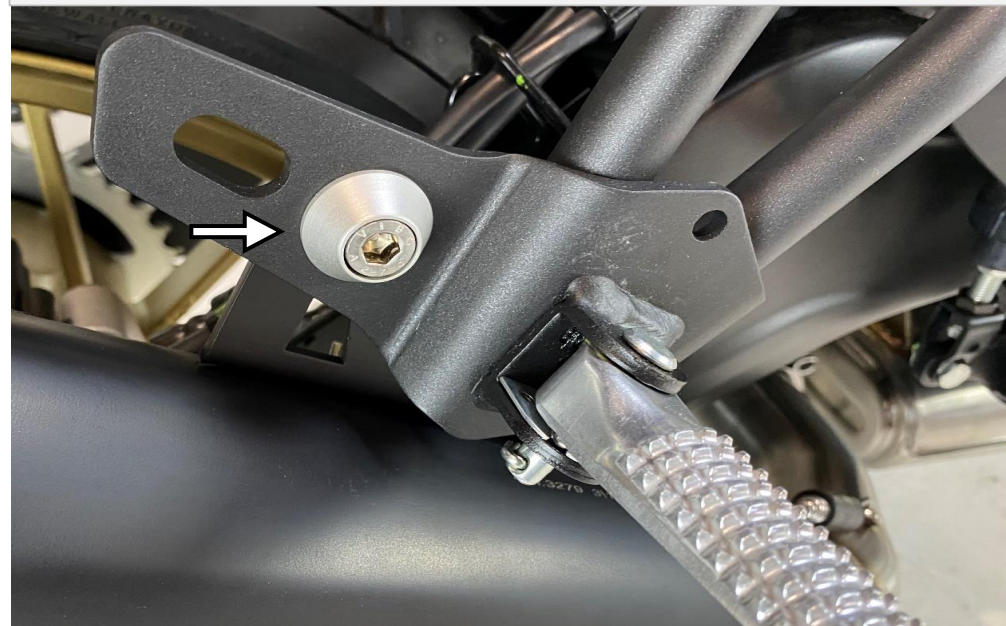
11. Place 2 x MUELLE Ø10x40 employing spring strip tool from our mounting kit.



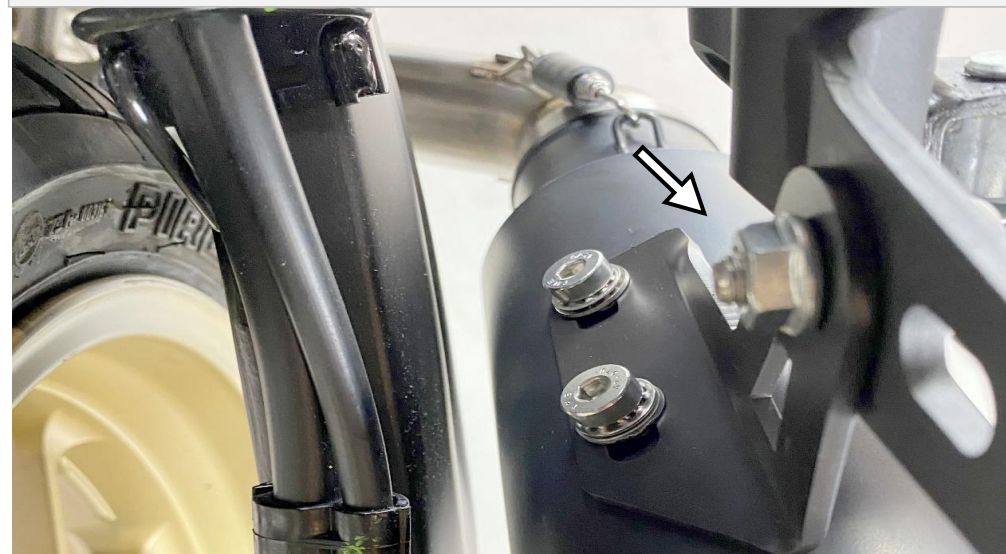
12. Correctly position SOP7262 muffler's bracket using 2 x M8x16 screw, 2 x GLOWM8 washers & 2 x ARANM8 as shown below.



13. Fasten and hand tighten SOP7262 muffler's bracket to the footrest fender using 1 x M8x16 screw, 1 x EMBM8 screw cover, 1 x ARANM8 washer & M8 nut, as shown below.



14. Detail view from inside.



ONCE ALL THE EXHAUST SYSTEM COMPONENTS ARE IN THE CORRECT PLACE WE CAN TIGHTEN THEM.